

This document informs about the changes of the new VP4control release V 1.18.29.

1 Changes and new options

1.1 Display montages Display montage editor

This new version has an implementation of a bipolar display montage editor and viewing options to display up to three specific montages types, i.e.

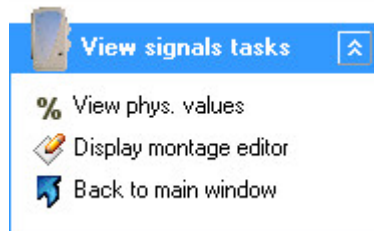
- **The view as acquired montage.**
This montage cannot be edited and shows the signals as acquired by the Vitaport 4.
- **My montage**
There is one display montage that can be edited by the user to define its preferred view.

Editing My Montage:

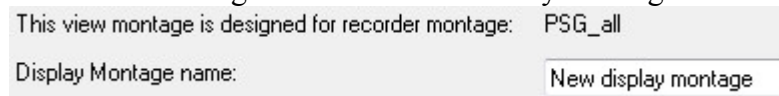
- Goto **View signals**
- Make sure **New display montage** is selected:



- Click on **Display montage editor**

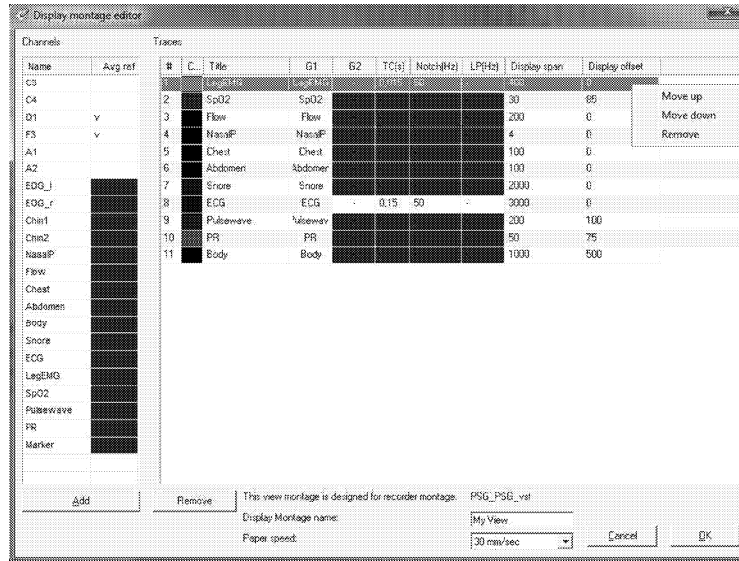


Now edit your DISPLAY montage to your requirements. Provide a name for the DISPLAY montage and click OK. The My Montage will now be renamed.



The User editable montage will be saved under the filename PSG_all.vdm.

- Editing is done by a montage editor in which a bipolar grid can be defined to channels.



Channels table: Here are all the available sources.

- It is possible for EEG traces to reference to an average ref. Select the AvgRef in the G2 combobox. The average reference is buildup from EEG Channels, which are indicated with a 'v'. Double click the channel to add/remove that channel from the average reference pool.

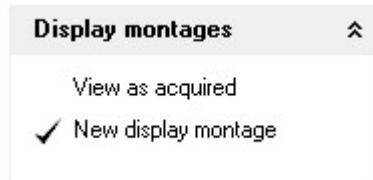
Traces table: This table defines which and how the channels are displayed.

- To add traces to the display montage: click the channel to add, and press the add button. Alternatively drag and drop it on the correct position.
- To remove traces: select the trace and press the remove button. Alternatively right click the trace and choose remove.
- To arrange the channels: Drag and drop the trace to the correct position. Alternatively use the right mouse button menu to move up or down traces.
- To change the color of the trace: click the square in the color column.
- To change the trace title: click the name in the title column.
- To change the electrode G1 or G2: Click the G1 or G2 column and choose the electrode from the dropdown list. Referential G2 electrode is only available for ExG type channels.
- To change the filtering: click the box in the TC, Notch or LP column. Filtering is only available for ExG type channels.
- To change the zoom of a trace: Change the display.

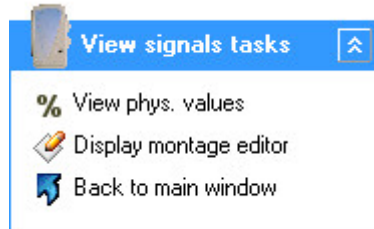
- **DEFAULT display montage(s).**
Multiple default display montages can be provided to the customer. These are always linked to a specific recorder montage file (f.i. Example1.vRm).

Creating a default montage:

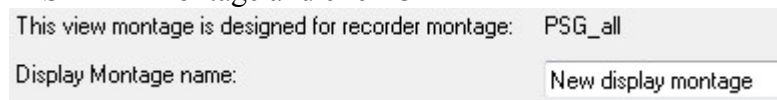
- Load the RECORDER montage (f/I in the montage editor) to which the DISPLAY montage should belong.
- Goto **View signals**
- Make sure **New display montage** is selected:



Click on **Display montage editor**




Now edit your DISPLAY montage to your requirements. Provide a name for the DISPLAY montage and click OK

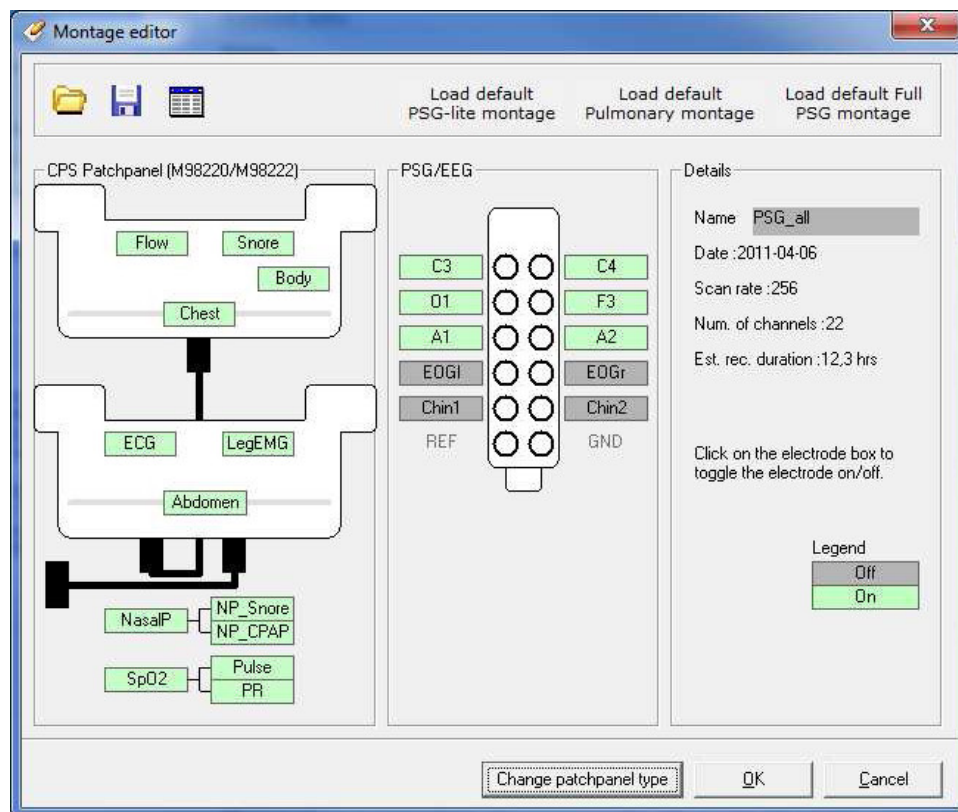


- **Renaming a My Montage to a Default montage**
Using a File Explorer, goto the folder: “c:\programdata\temec\vp4control\Display_Montages” and rename the previously saved My Montage to a specific montage name.
Now this montage will be recognized by VP4control when the corresponding RECORDER montage is loaded and will be additionally available in the **Display Montages** box to use as a extra display montage.

1.2 Recorder Montage

NOTE:

For recorder montages, users with older montage files have an option () in the montage editor) to import these and save them to get them in the new structure.



1.2.1 ATTENTION: Labels.

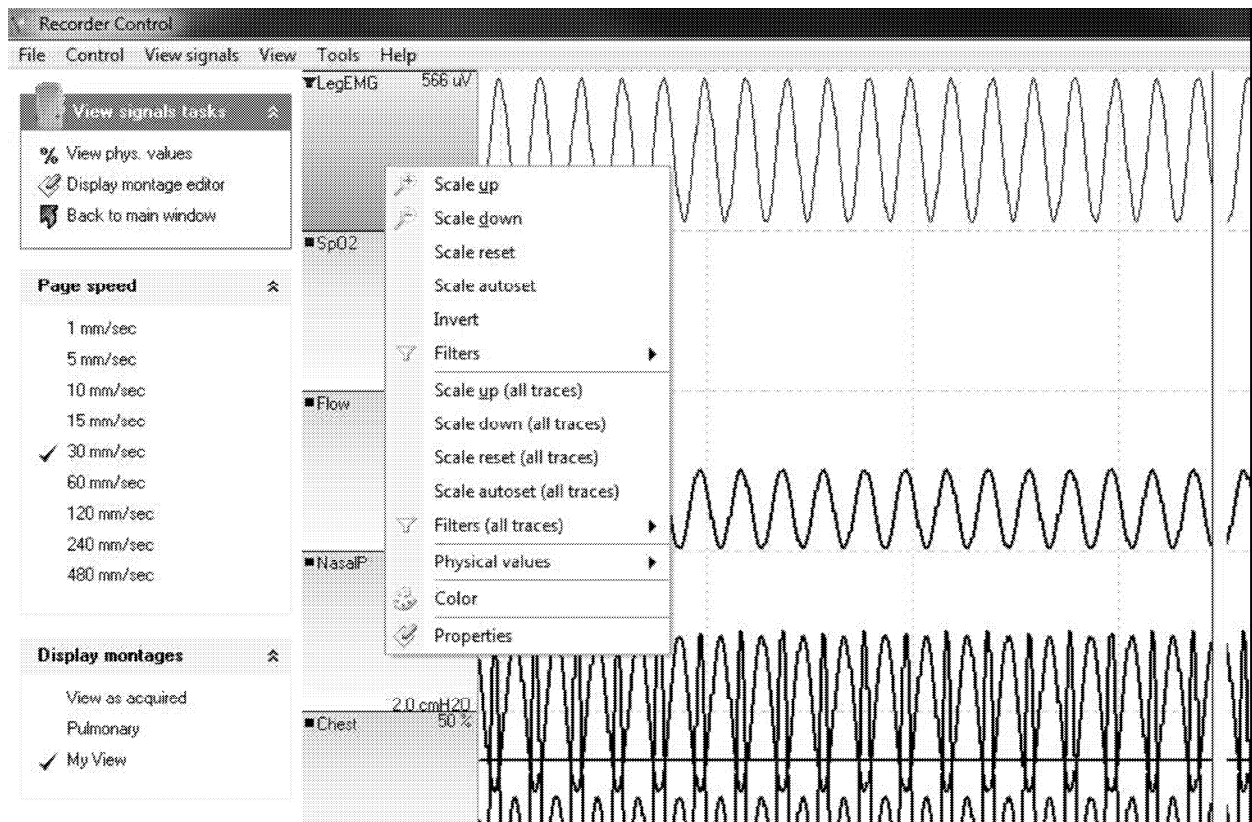
For clarity and consistency with AASM 2007 the following labels have been changed as standard channel labeling:

- Pulswave (instead of Pulse)
- EOG_l (instead of EOGl)
- EOG_r (instead of EOGr)
- EOG_lr (instead of EOGr)

Please check your ANALYSIS software for consistency with these labels!

1.3 Signal filters

During View signals (Biocheck) the user can select options to apply filters to the EEG, EOG, EMG and ECG signals.



To change the trace properties for a trace: Right click in the area containing the label to pop-up the select box.